

BOTTLE COLOUR



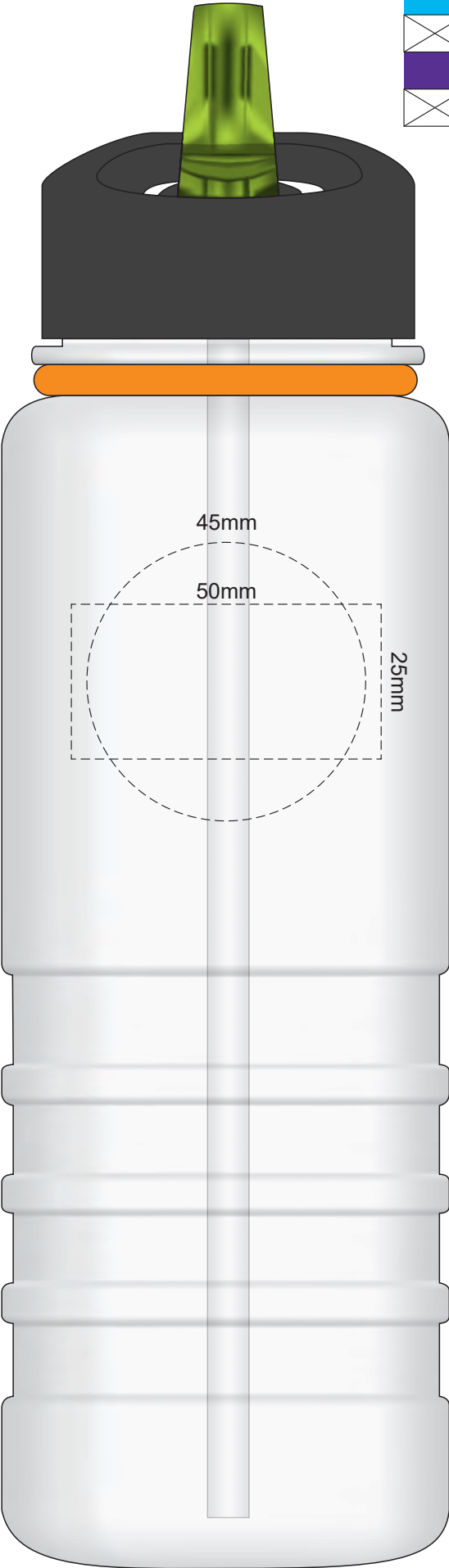
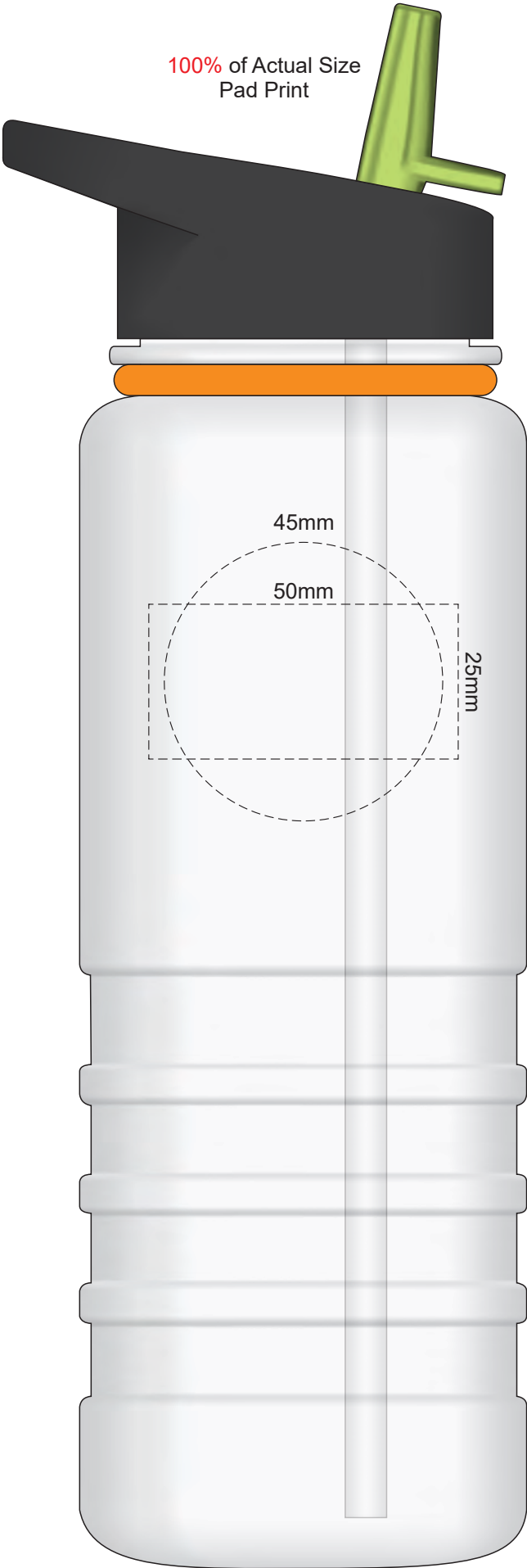
BAND



SIPPER



100% of Actual Size  
Pad Print



BOTTLE COLOUR



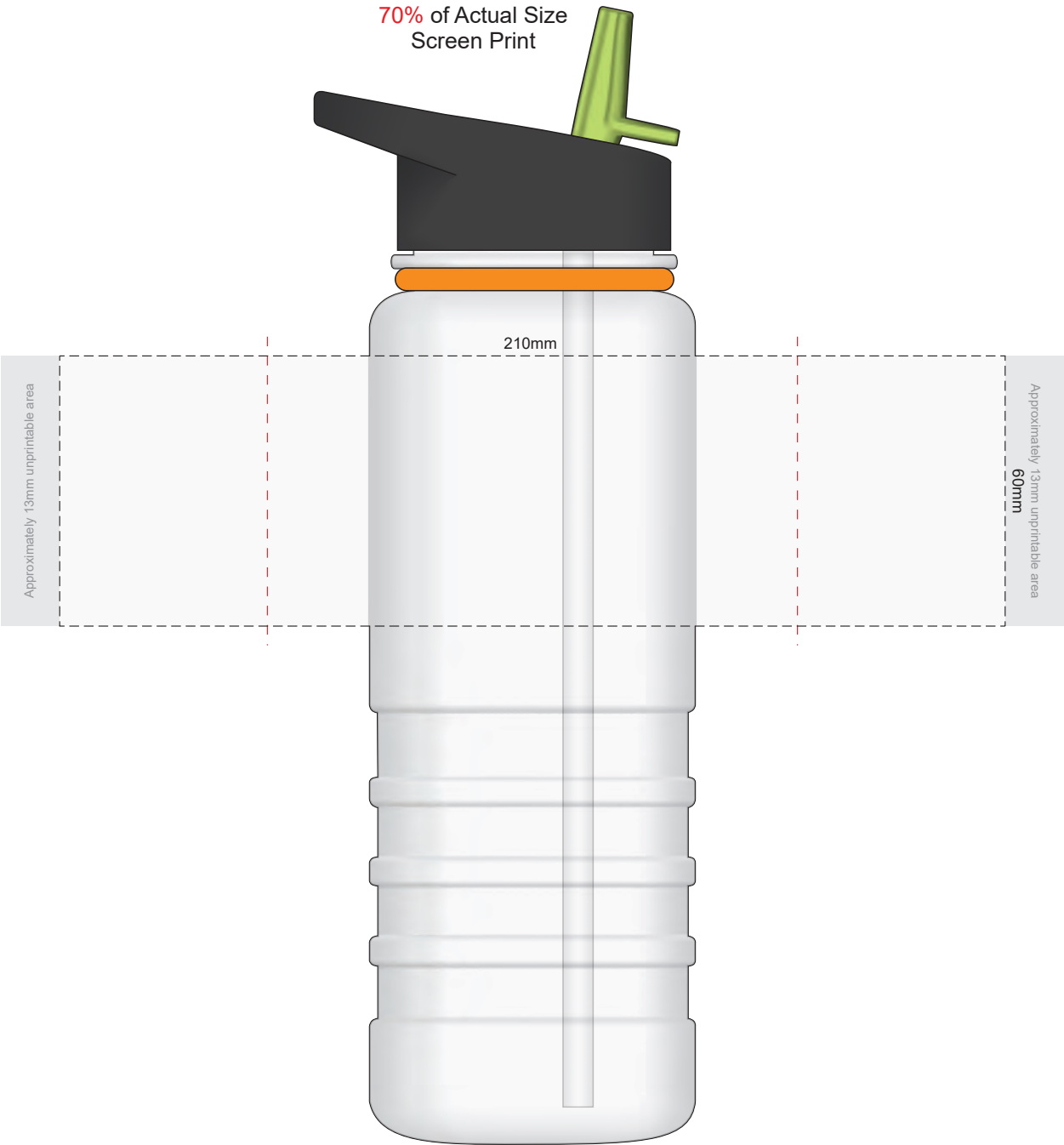
BAND



SIPPER




70% of Actual Size  
Screen Print



Red Line = Exact opposites of the product  
(centre artwork to the red line)

70% of Actual Size  
Digital Rotary  
(Gloss Finish)

A 3D CAD model of a digital rotary tool. The main body is black, the handle is green, and the base is orange. The model is shown from a side-on perspective, highlighting its compact and ergonomic design.

Technical drawing of a 3.5mm audio jack plug. The drawing shows the plug with a central pin. Dimensions are indicated: 80mm for the total length, 19mm for the length of the main body, and 16mm for the length of the sleeve. The drawing also shows the approximate 2mm unprintable area on the left and right sides, indicated by dashed lines.

Red Line = Exact opposites of the product  
(centre artwork to the red line)